

EMPIRE

Bedroom Collection



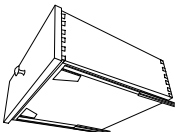
California King Empire Supreme Bed
with Short Footboard shown on North American Cherry Hardwoods

Customize Your Stuart David Handcrafted Bedroom:

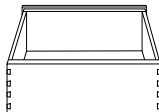
- | | | | | |
|--|---|---|---------------------------------------|---|
| <p>1 NORTH AMERICAN
HARDWOODS:</p> <ul style="list-style-type: none"> AK - RUSTIC ALDER CHY - CHERRY CK - RUSTIC CHERRY HK - RUSTIC HICKORY MAP - MAPLE OAK - RED OAK OK - RUSTIC WHITE OAK QS - QUARTERSAWN WHITE OAK WAL - AMERICAN WALNUT BEC - +BEECH | <p>2 OVER 100
DESIGNER FINISHES*</p> | <p>3 SIZE</p> <ul style="list-style-type: none"> QUEEN CALIFORNIA KING EASTERN KING <p>CUSTOM SIZE MODIFICATIONS
AVAILABLE W/QUOTE APPROVAL</p> | <p>4 ARTISAN
HARDWARE*</p> | <p>5 OPTIONS*</p> <ul style="list-style-type: none"> O-1SIDE - 1 SIDE OF DRAWERS O-ABR - ADJUSTABLE BED O-PDECK - PLATFORM DECK |
|--|---|---|---------------------------------------|---|

* See price list for exclusions & current selections

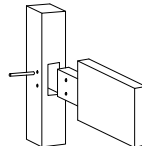
Standard Features:



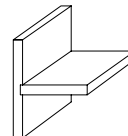
• Drawers suspended with heavy duty undermount **full extension soft-close** guides allowing for effortless opening and closing.



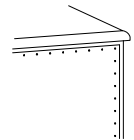
• All wood drawers assembled with dovetail joints for strength.
• Drawer interiors are smoothly sanded and lacquer-sealed.



• Tenons are a key element of construction. A board's end is cut off for insertion into a mortise. Tenons are then secured with wood pins.



• Permanent joint construction. We use a variety of joint construction methods that are time tested to ensure life long durability and strength.

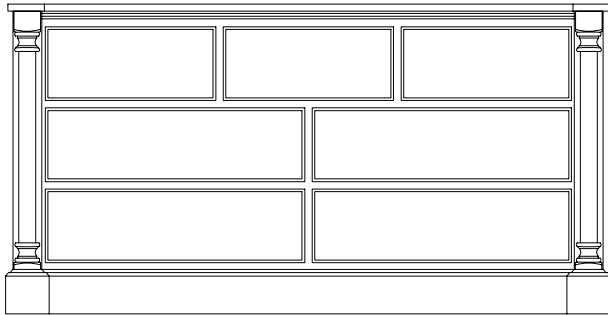


• Case backs (1/4" thick) with recessed back panels.

EMPIRE

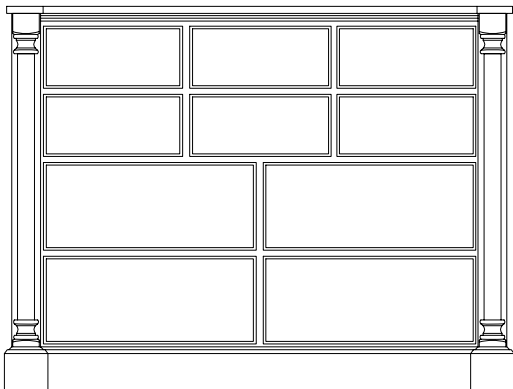
Bedroom Collection

DRESSERS



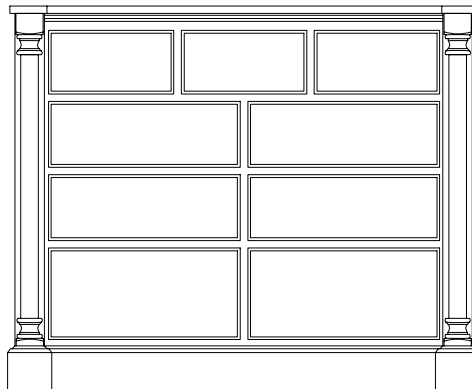
BD-201-[EMP]

Dresser
7 Drawers
72w 19d 38h



BD-204-[EMP]

Dresser
10 Drawers
61w 19d 47h



BD-203-[EMP]

Dresser
9 Drawers
55w 19d 47h

MIRRORS



BM-10-[EMP]

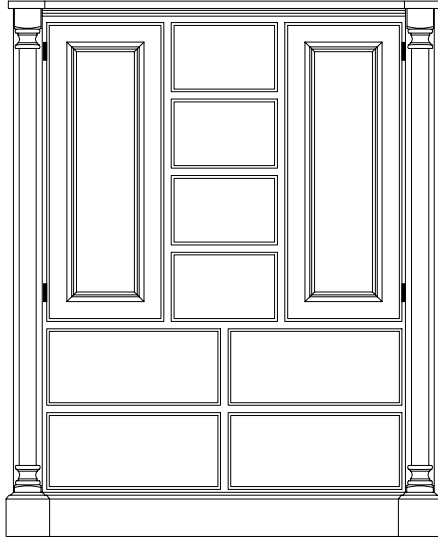
Vertical Mirror
39w 2d 41h

BM-73-[EMP] (shown)

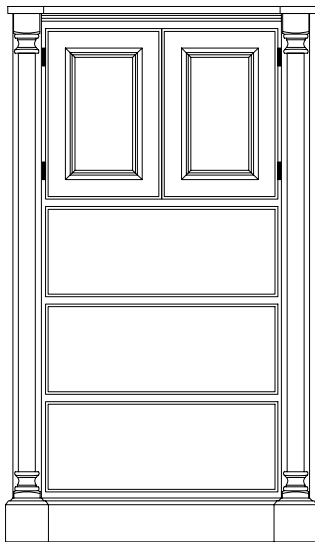
Wide Mirror
48w 2d 35h



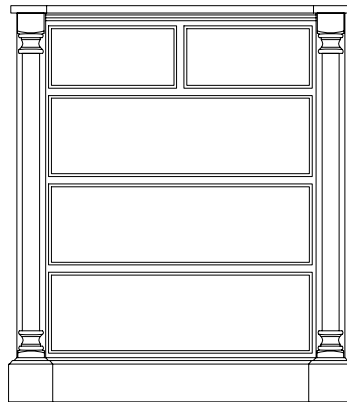
CHESTS



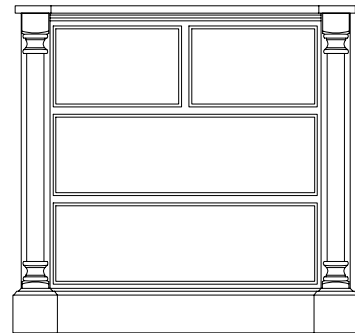
BC-97-[EMP]
Master Chest
8 Drawers, 2 Doors
with 4 adj. shelves
52w 19d 65h



BC-09D-[EMP]
Chest
3 Drawers, 2 Doors
with 2 adj. shelves
38w 19d 65h

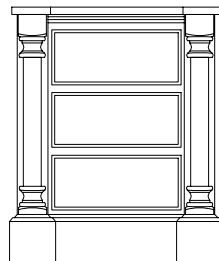


BC-716-[EMP]
Chest
5 Drawers
41w 19d 50h

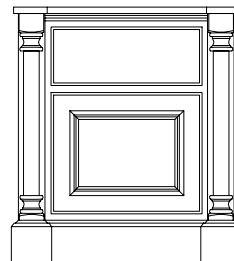


BC-31-[EMP]
Chest
4 Drawers
48w 19d 42h

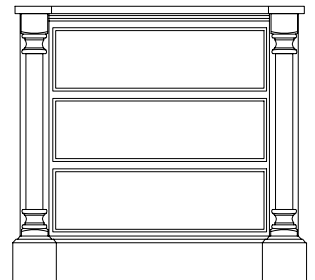
NIGHTSTANDS



BN-21-[EMP]
Nightstand
3 Drawers
24w 19d 29h



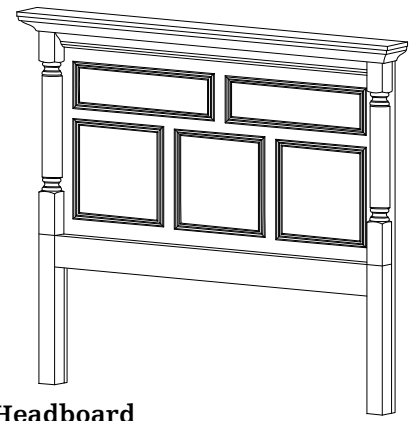
BN-22L-[EMP]
(hinges on Left)
BN-22R-[EMP]
(hinges on Right)
Nightstand
1 Drawer, 1 Door
with 1 adj. shelf
24w 19d 29h



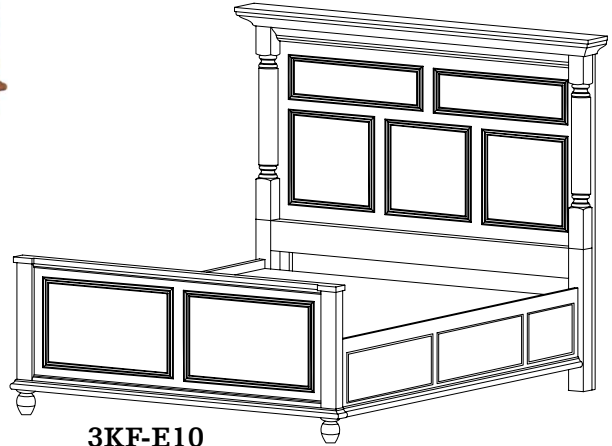
BN-24-[EMP]
Large Nightstand
3 Drawers
35w 19d 32h



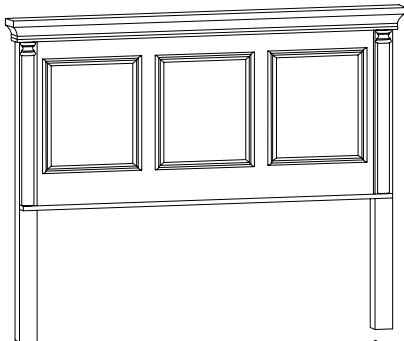
3CF-E10
Empire Supreme Bed
Headboard 70"H
Footboard 31"H



3H-E10
Empire Supreme Headboard
70h

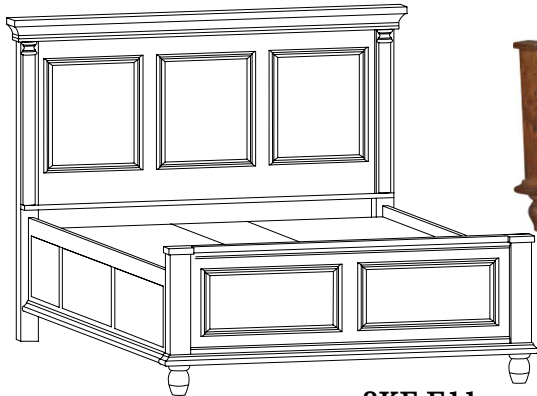


3KF-E10
Empire Supreme Storage Bed
Headboard 70"H
Footboard 31"H



3H-E11
Empire Legacy Headboard
54h

Empire Legacy Beds
Available Sizes
in Queen, Eastern & California King



3KF-E11
Empire Legacy Storage Bed
Headboard 54"H
Footboard 25"H



3CF-E11
Empire Legacy Bed
Headboard 54"H
Footboard 25"H