

Empire Wallbed Collection



It's all about choice: 1 Type of wood 2 Finish 3 Size 4 Hardware

Fine Hardwoods Available

Shown Rustic Hickory (HK)

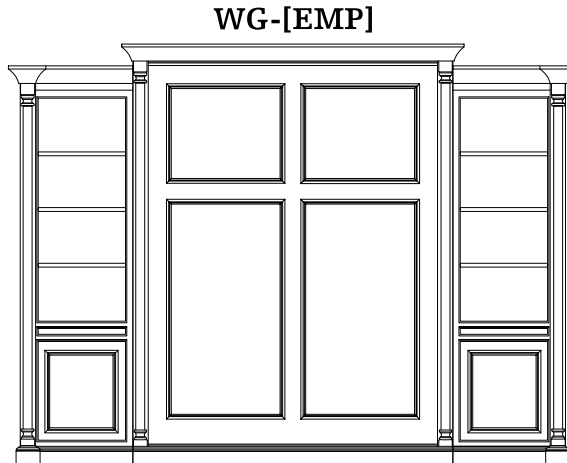
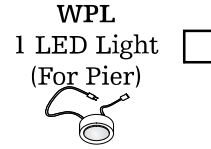
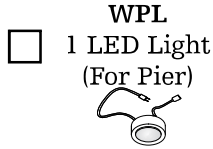
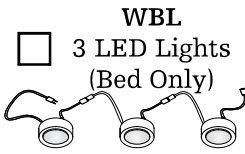
- CHY** - Cherry
- MAP** - Maple
- Oak** - Red Oak
- OS** - Quartersawn
(White Oak)
- AK** - Rustic Alder
- CK** - Rustic Cherry
- HK** - Rustic Hickory
- OK** - Rustic Oak

Collection Features

- Makes The Most Of Limited Space
- Reliable Concealed Counter-Balance Spring System
- Easily Installed & Adjusted. If The Time Comes, It Can Be Uninstalled & Moved To Your New Home!
- Accommodates Any Plush Mattress Up To 11"



Empire [EMP]

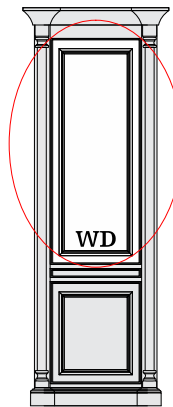
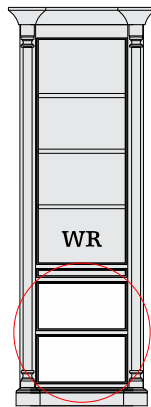


- Queen** 125"W, 24"D, 93"H
- Full** 119"W, 24"D, 88"H

With 24"W Piers

Add Drawers

Add Upper Door

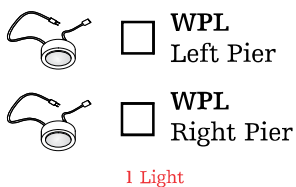


- Left**
- Right**

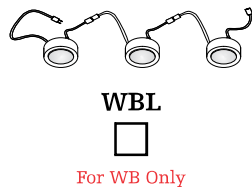
- Left**
- Right**

Wood	Cherry	Maple	Oak	QS Oak	Rustic Alder	Rustic Cherry	Rustic Hickory	Rustic Oak	Color	Hardware	Drawer	Door	Bed	Extras
											QTY:	QTY:	QTY:	

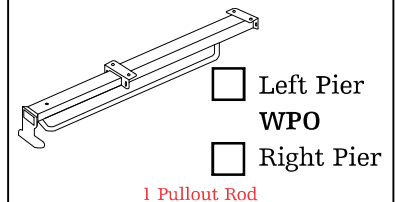
LED Lights For Pier(s)



LED Lights For WB




Clothes Carrier Pullout




Wallbed w/ 1 Pier (L or R)


WPL
1 LED Light
(For Pier)




WBL
3 LED Lights
(Bed Only)



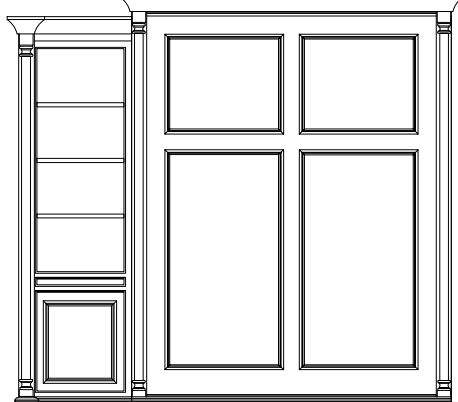
WBL
3 LED Lights
(Bed Only)



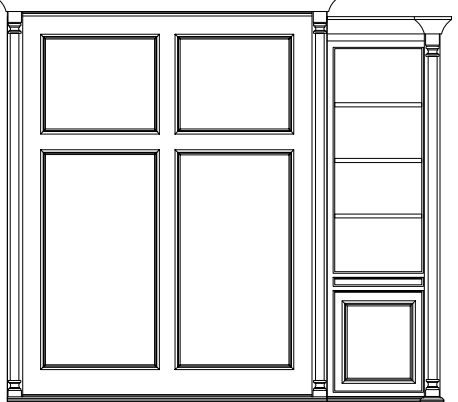
WPL
1 LED Light
(For Pier)



WL-[EMP]



WR-[EMP]



Queen 99"W, 24"D, 93"H

Full 93"W, 24"D, 88"H

With 24"W Left Pier


Queen 99"W, 24"D, 93"H

Full 93"W, 24"D, 88"H

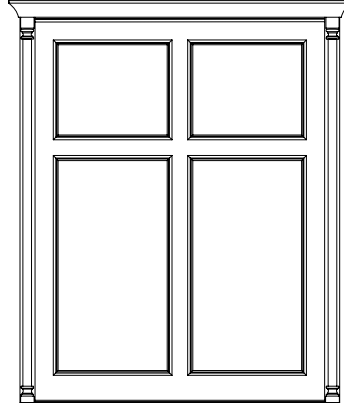
With 24"W Left Pier

Freestanding Wallbed

WBL
3 LED Lights
(Bed Only)



W-[EMP]V



Queen 76"W, 24"D, 93"H

Full 70"W, 24"D, 88"H